



USAID
FROM THE AMERICAN PEOPLE

Infrastructure in Rebuilding and Developing Countries/Session X

Conflict Diagnosis & Programming

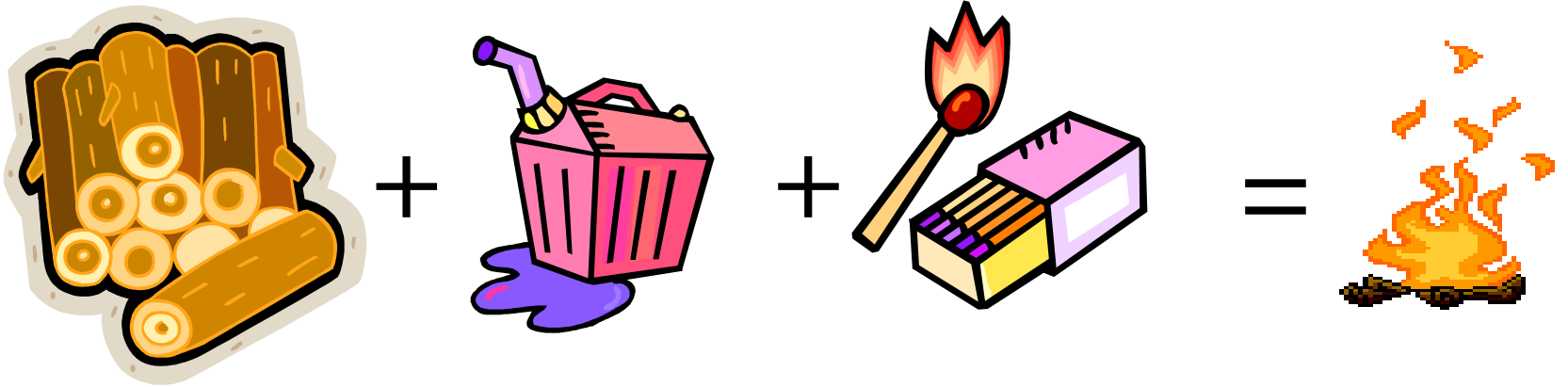
Tjip Walker

USAID/DCHA/CMM



USAID
FROM THE AMERICAN PEOPLE

The conflict equation



Motives + Means + Opportunity = Violent Conflict



USAID
FROM THE AMERICAN PEOPLE

Motives



Social patterns that threaten identity and provide the source(s) of grievance:

1. Elitism
2. Exclusion
3. Chronic capacity deficits
 - Systemic stagnation
 - Strategic resources (oil, diamonds, water)
 - Ungoverned space
4. Transitional moment: unmet expectations
5. *Corruption/rent-seeking*



USAID
FROM THE AMERICAN PEOPLE

The conflict equation



+



=



Motives

+

Means

=

Violent Conflict



USAID
FROM THE AMERICAN PEOPLE

Means



Resources that facilitate the transformation of grievance into violent conflict:

- Leadership
- Organizational capacities
- Financing
- Unrestricted operating space



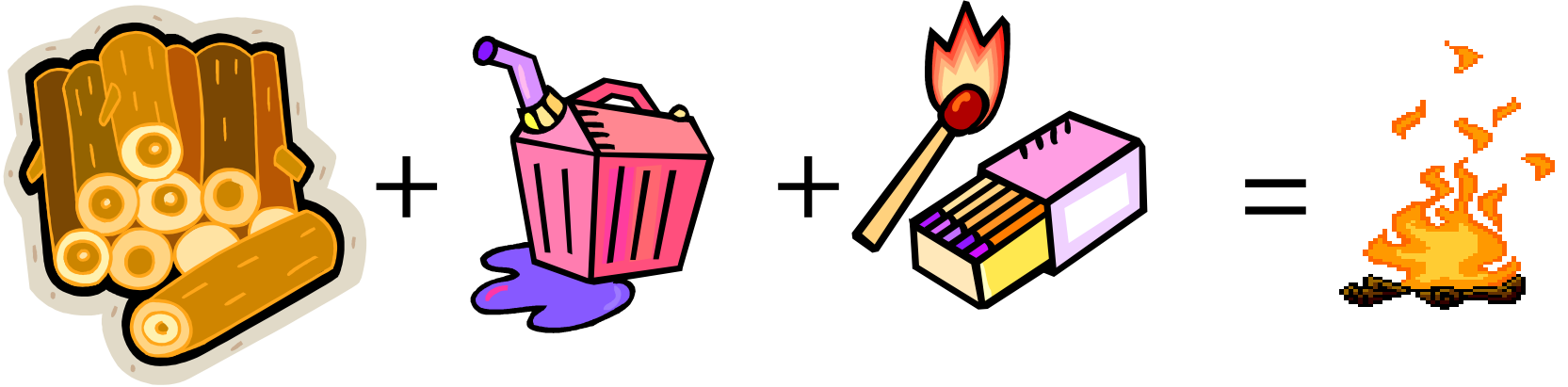
Stakeholder analysis that focuses on organizations/ individuals central to translating patterns of grievance into action.

1. **Actor** – Who?
2. **Role in pattern** – What are they doing?
3. **Rationale** – Why?
4. **Resources/capacity** – Can they effect change?
5. **Our approach** – How will we engage them?
6. **Priority** – Who do we need to focus on?



USAID
FROM THE AMERICAN PEOPLE

The conflict equation



Motives + Means + Opportunity = Violent Conflict



USAID
FROM THE AMERICAN PEOPLE

Opportunity



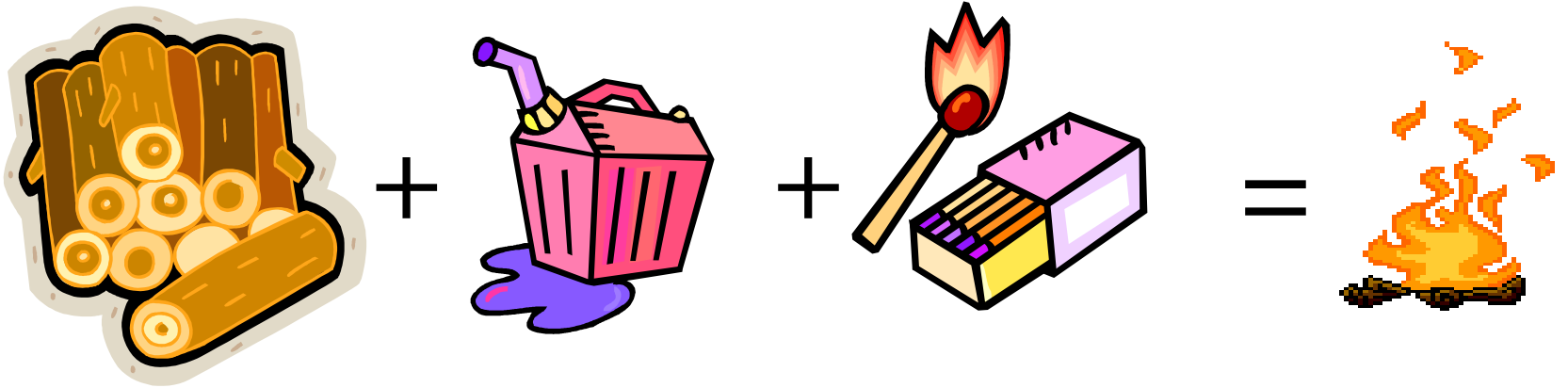
A triggering event: moments in time that crystallize grievances and create short-term windows of vulnerability.

- Elections
- Passage of legislation
- Ruling in a court case
- Assassinations/targeted political violence
- Holidays



USAID
FROM THE AMERICAN PEOPLE

Case Study: Sri Lanka, Part 1



Motives + Means + Opportunity = Violent Conflict

Please read the Sri Lanka case study. In your groups:

1. Conduct a basic conflict diagnosis attempting to apply all three of the elements in the conflict equation.
2. Identify a group spokesperson who is prepared to present the group's analysis.



USAID
FROM THE AMERICAN PEOPLE

Case Study: Sri Lanka, Part 2

Please read the Sri Lanka case study. In your groups:

- Answer the following questions:
 - What information do you need to design your project?
 - Who are the critical actors?
 - What are potential implementation challenges?



USAID
FROM THE AMERICAN PEOPLE

Two more topics

1. Context
2. Mitigating factors

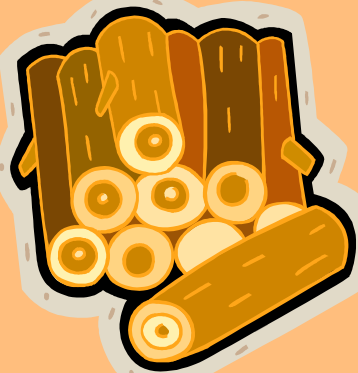


USAID
FROM THE AMERICAN PEOPLE

The conflict equation

Context

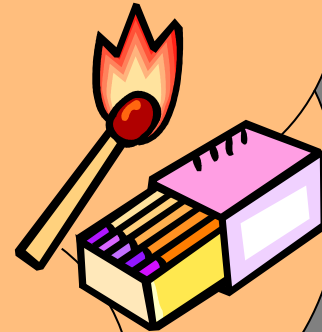
- Structural conditions
- Governance



+

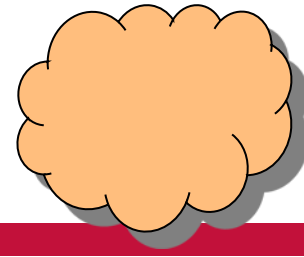


+



=





Structural conditions

- Conditions that we treat as givens because they are difficult for humans to alter within our planning horizon.

Structural conditions do not cause conflict.

Governance

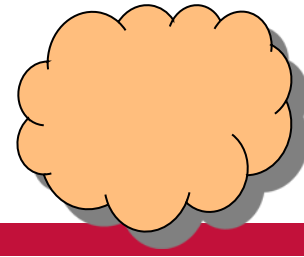
- The ways that rules are made and enforced that affect people's lives day-to-day.
- Governance mediates the effects of structural factors on people's lives.

Governance occurs both formally and informally.



USAID
FROM THE AMERICAN PEOPLE

The context of conflict

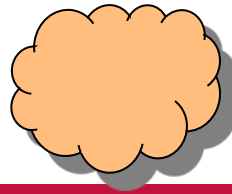


Structural conditions

- Poverty/low quality of life
- Bad neighborhood
- Recent history of conflict
- Low level of economic growth/recession
- Heterogeneity (2 or 3 equally sized groups)
- Youth bulge

Governance

- Partial democracies, especially those with factional competition
- Policy of discrimination

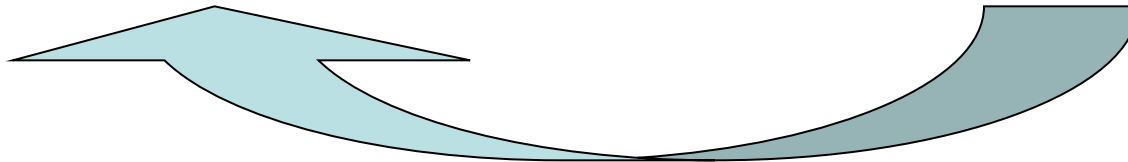


- **Perceptions of illegitimacy**

- Wrong goals
- Wrong means
- Wrong leaders
- Wrong process for selecting goals, means and leaders

- **Perceptions of ineffectiveness**

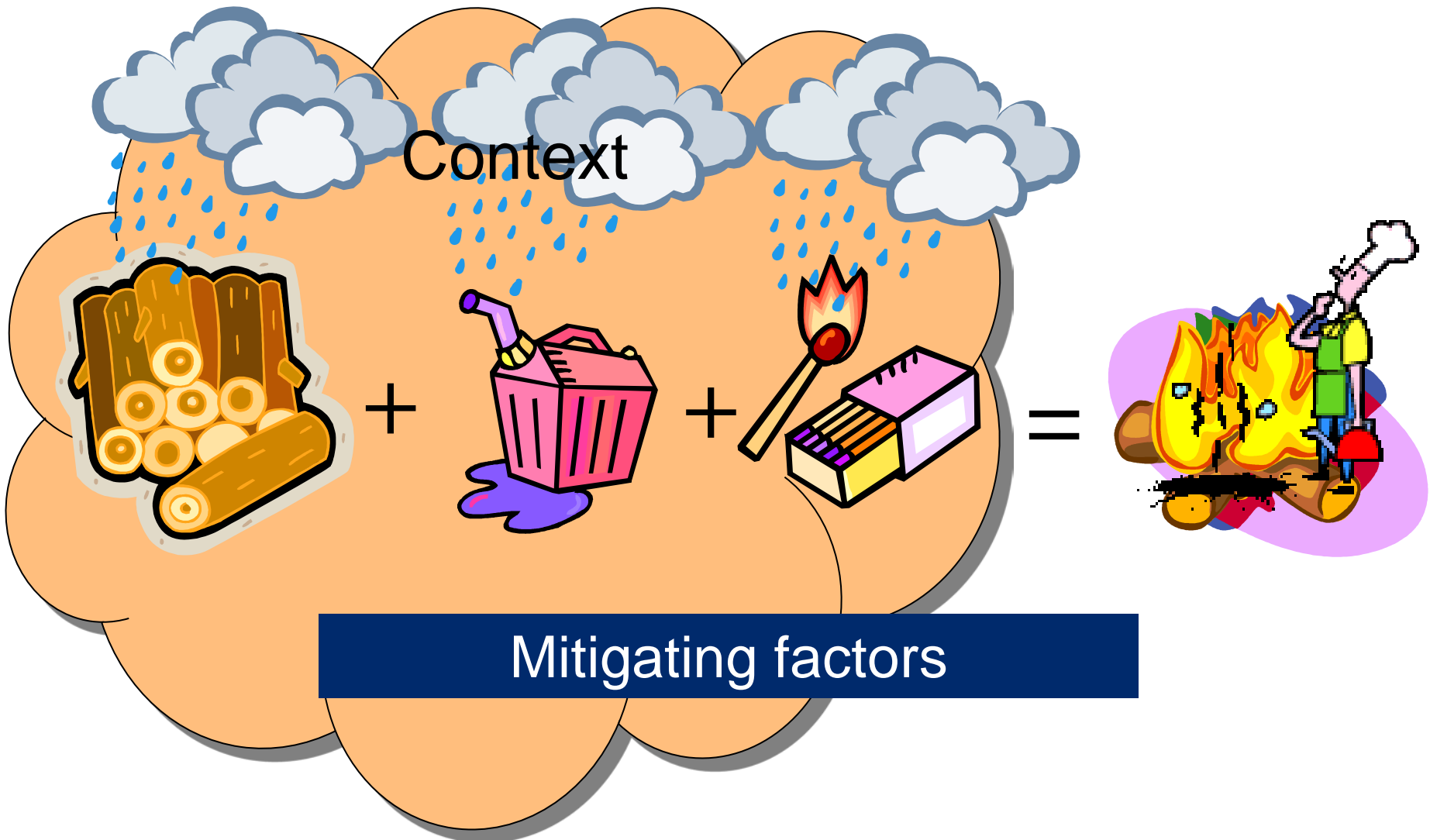
- Unmet expectations in quantity and quality of governance outputs
 - Security
 - Political
 - Economic
 - Social





USAID
FROM THE AMERICAN PEOPLE

The conflict equation





USAID
FROM THE AMERICAN PEOPLE

Contact Information

- Website: http://www.usaid.gov/our_work/cross-cutting_programs/conflict/

Tjip Walker

USAID

**Office of Conflict Management
and Mitigation**

(202) 712-4842

stwalker@usaid.gov