



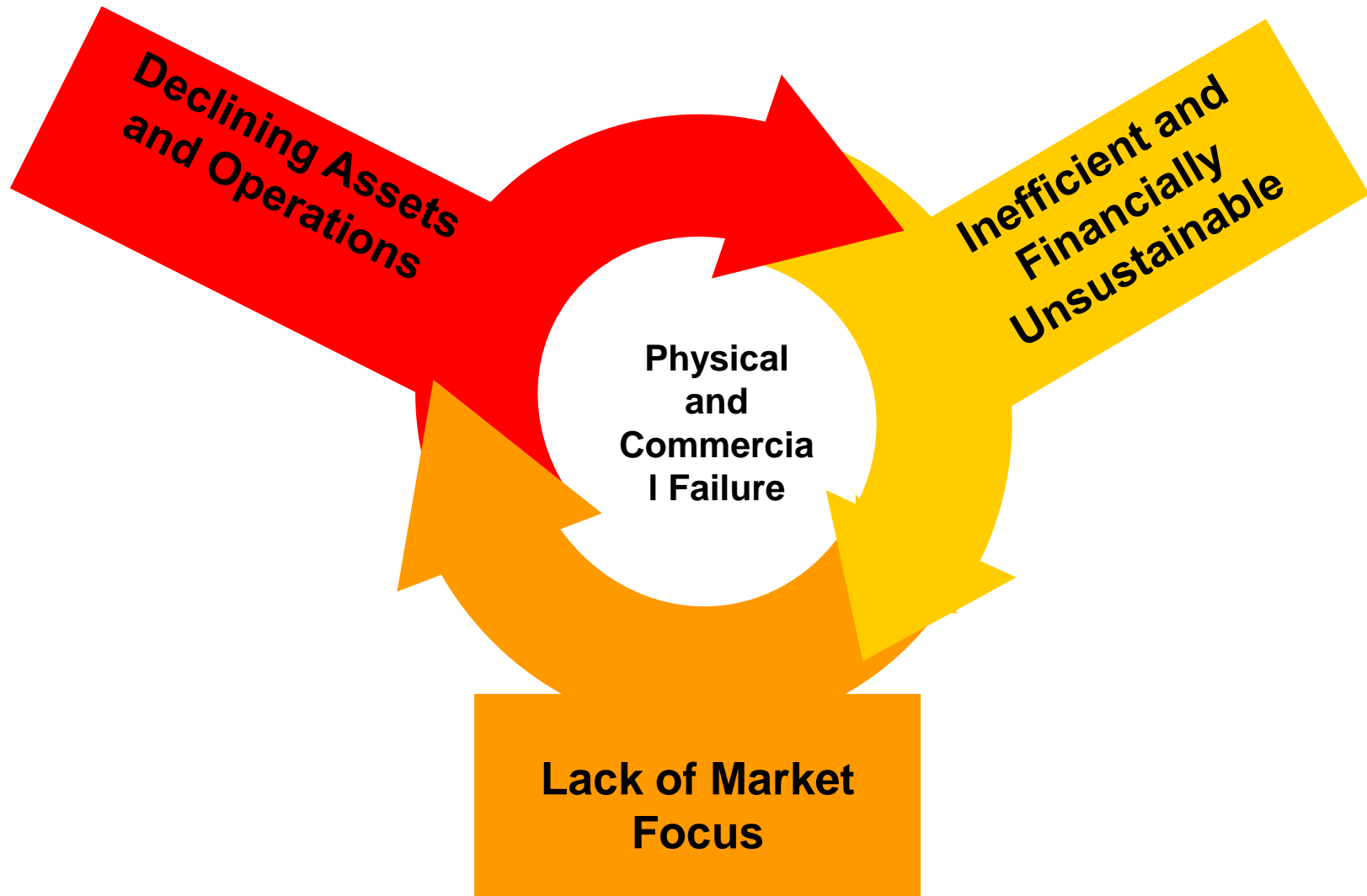
**USAID**  
FROM THE AMERICAN PEOPLE

# **Public-Private Partnerships in Infrastructure: A Proven Model for Results The Manila Experience**

Heather Skilling

Africa Bureau, Water Team, USAID/Washington  
Infrastructure Conference, December 15<sup>th</sup> 2010

# The Cycle of Decline



# What's the Problem?

## Poor Management!



# How Can We Improve Management?

**Public Private Partnerships are a good option - with proven results in Manila.**



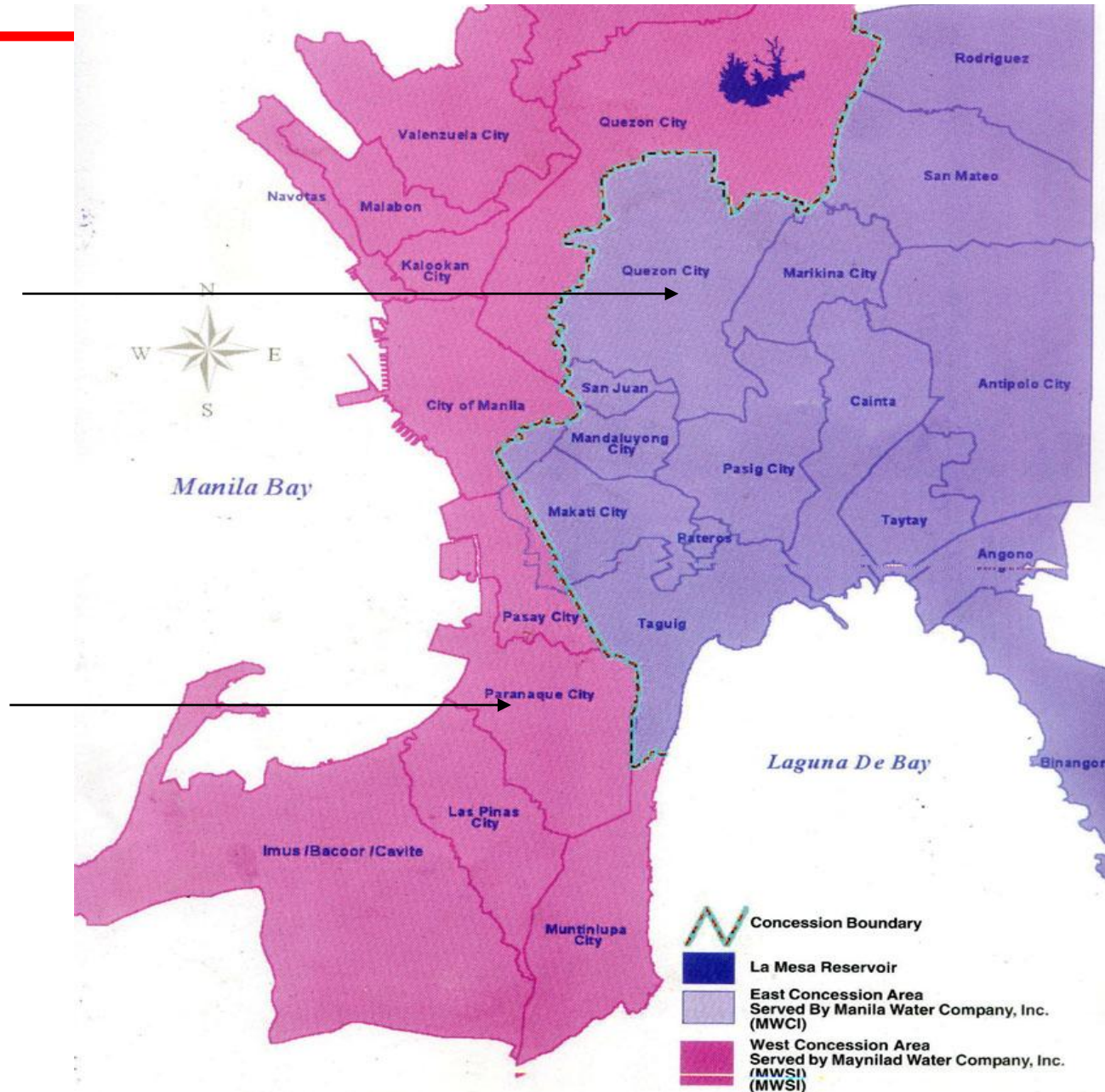
## **What was the starting point in Manila?**

- Low water coverage – even worse sewerage
- High rates of water-borne disease
- Debt and inefficiency
- Environmental issues

# The Concession Design

Manila Water Company

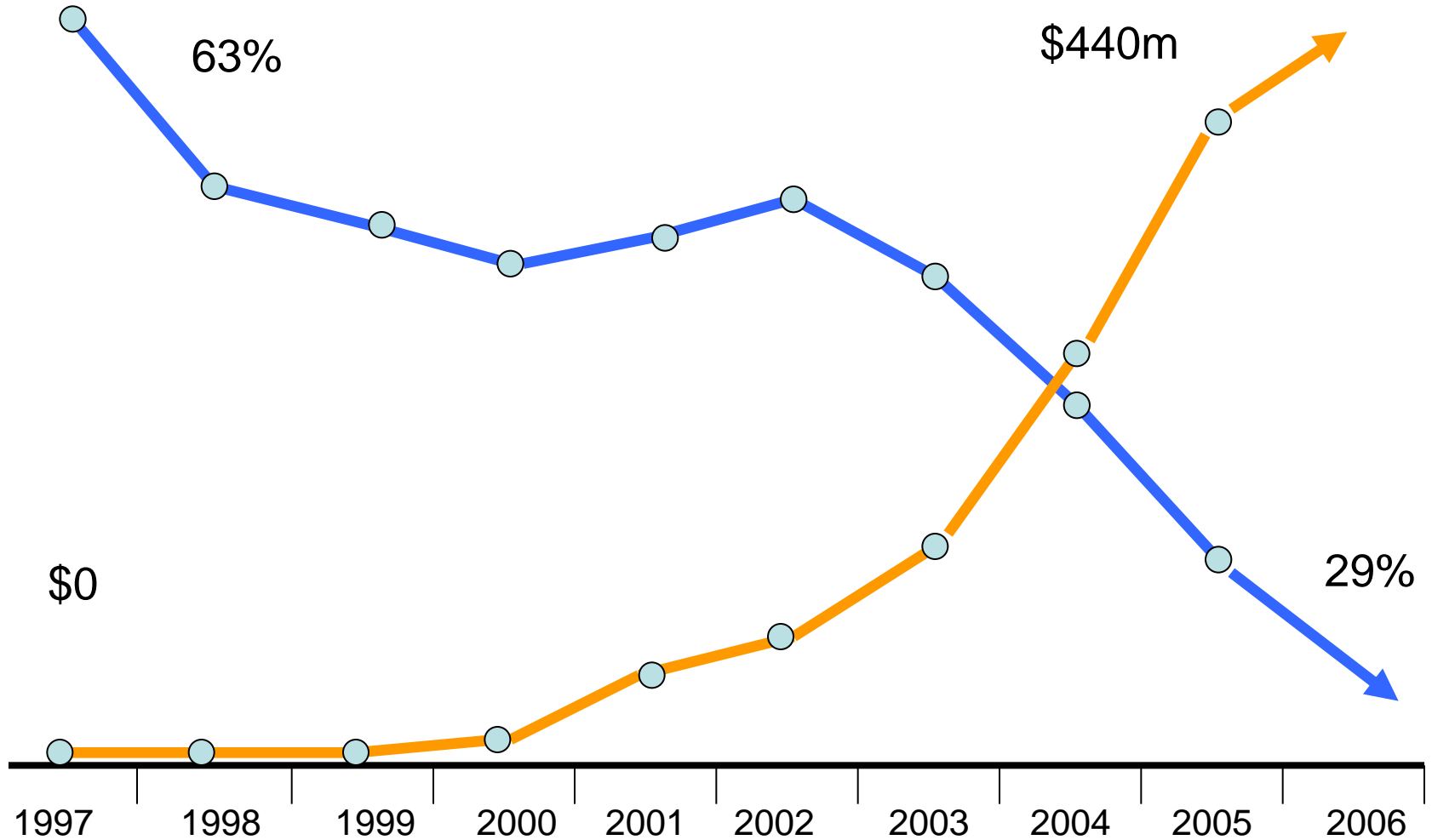
Maynilad Concession



# Results of Manila Water Concession

## Non Revenue Water

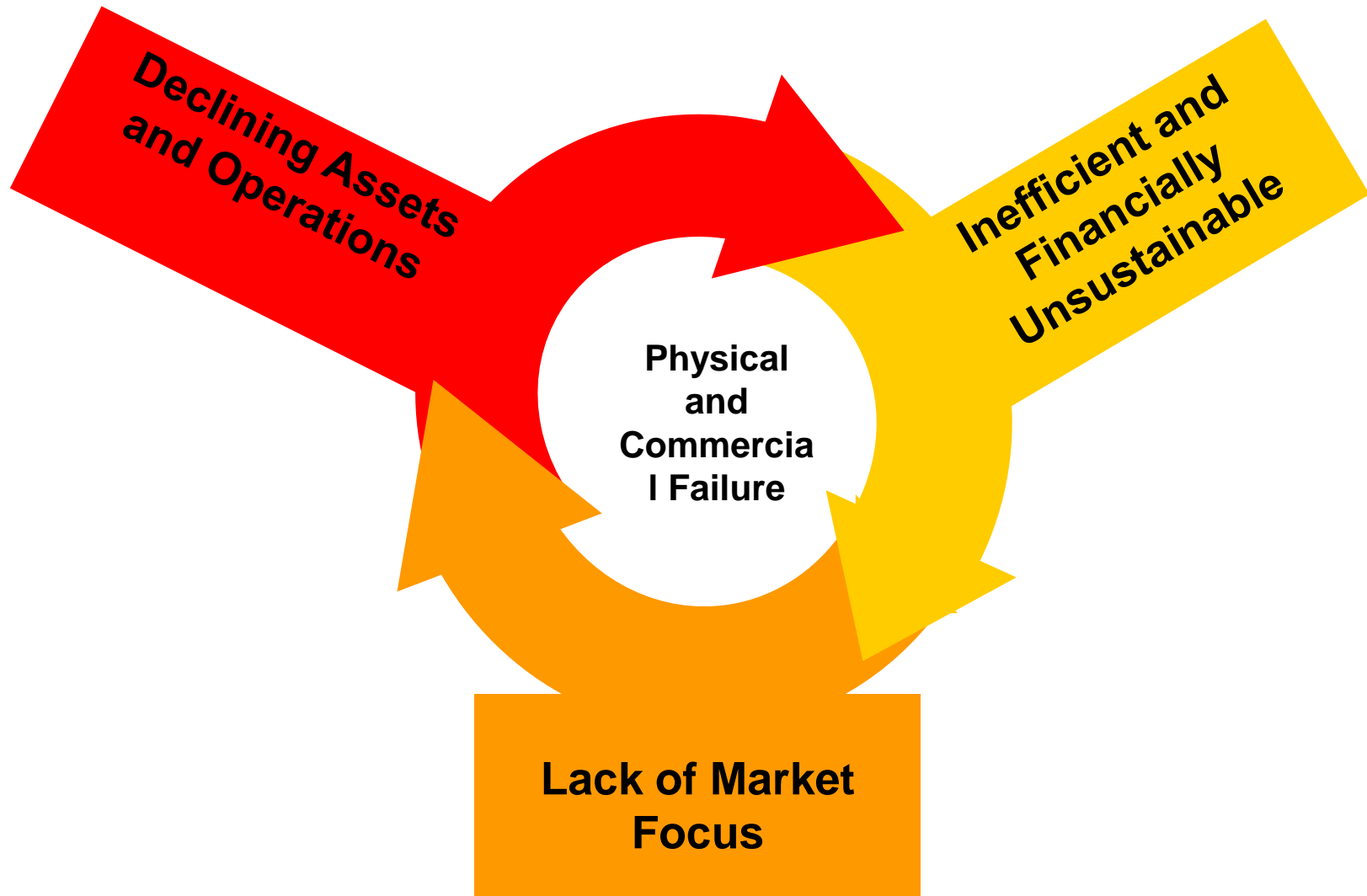
## Investment



# What Else Was Accomplished?

|                                 | 1997     | 2010          |
|---------------------------------|----------|---------------|
| Connections                     | <400,000 | 1,150,000     |
| Population with 24 hr service   | 67%      | 99%           |
| Population with pressure (7psi) | 25%      | 79%           |
| Private Financing               | 0        | \$450 million |
| Average Monthly H/H consumption | ?        | 49 m3         |
| Sewerage                        | 3%       | 16%           |

# The Cycle of Decline





# How Did Manila Water Get These Results?

